

Violin II

Street Echoes

for chamber orchestra

Charlie Barber

1. Piazza Navona, Rome

$\text{♩} = 180$

sim.

2

f

A

2

f

B

pp

C

cresc.

p

D

f

E

mf

cresc.

F

mf

p

5

52 **G**

f *leggiero*

56

60 **H**

mp

65 **I**

mp

68

72 **J**

f

76

mp

80 **K**

mp *f*

85 **L**

f *f*

92 **M**

f *f*

97 **N**

f

107 **O**

p

112 **P**

cresc. *f*

117 **Q**

mf

122 *cresc.*

127 **R**

mf

131

136 **S**

ff

141 **T**

mf

145

150 **U**

f

155 **V**

mf

160 **W**

mf *ff*

168 **X**

f *f*

175

f

181

pp *ppp*

2. Taksim Square, Istanbul

(3 + 2 + 2 + 3)

185 ♩ = 104

p

195 **A**

mf *p*

205

2

Charlie Barber - Street Echoes
Violin II

209 **B** *cantabile e espress.*

mf

215

f

220

225 **C**

233

mp

241 **D**

f *mf*

246

cresc. *f* *mp*

251

f *dim.* *mp*

Violin II

257 **E**

p

267

mf *p*

277 **F**

mf *pp*

286

2

2

294 **G**

2

p *mf* *mp*

302 measured

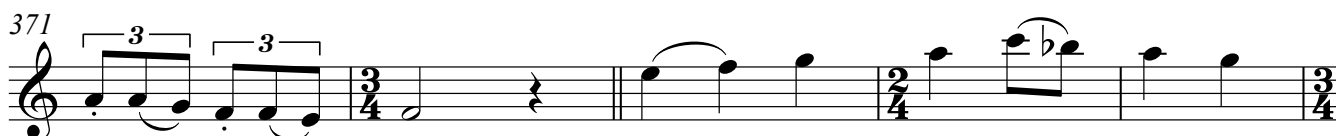
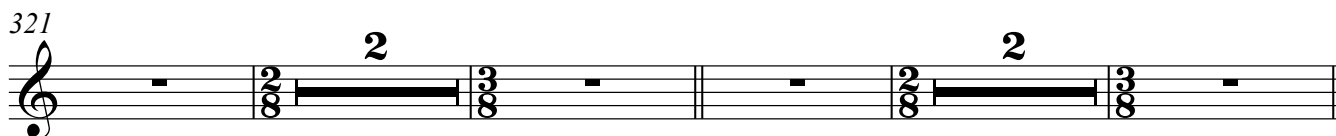
mf *p* *mf* *p*

310 **H**

mf *p*

316

2



Charlie Barber - Street Echoes
Violin II

9

L

381

f

385

389

f

393

397 **M**

p

405

mf

p

413

mf

p

421 **Rit.**

pp

3. People's Square, Shanghai

♩. = 75

428 **A** 2

432 **B** *mf*

434 **C** *mf*

436 **D** Sul G / Open D *mf stacc.*

438 **E** **F** 2

442 **G** *mf*

444 *f*

446 **H** *f*

448 **I** Sul G / Open D *p*

450 *p*

452 **J**

p *mp* *cresc.* *mf*

454 **K**

f

456 **L** Sul D / Open A

mf

458 **L**

f

460

mf *cresc.* *f*

462 **M** Sul D / Open A

f *strepitoso*

464 **N**

f *cresc.* *ff*

466 **O** Sul G / Open D

f

468 **P** Sul D / Open A

f

470 **Q** **R** 2

f *mf* *cresc.* *f*

Violin II

474 **S** *f* Sul D / Open A

477 *f*

480 Sul G / Open D *f*

482 *f* *cresc.*

484 **T** Sul D / Open A *f*

486 Sul G / Open D

488 **U** *f* *mf* *cresc.*

490 **V** *f* *f* *cresc.*

492 *ff* *cresc.* *sff*

Detailed description of the musical score: The score is for Violin II, measures 474-492. It is in G major (one sharp) and 4/4 time. The key signature has one sharp (F#) and the time signature is 4/4. The score is divided into sections marked S, T, U, and V. Section S (measures 474-476) starts with a forte (f) dynamic and a sul ponticello (Sul D / Open A) instruction. Section T (measures 484-486) also starts with a forte (f) dynamic and a sul ponticello (Sul D / Open A) instruction. Section U (measures 488-490) starts with a forte (f) dynamic and a sul ponticello (Sul D / Open A) instruction. Section V (measures 490-492) starts with a forte (f) dynamic and a sul ponticello (Sul D / Open A) instruction. The score includes various musical techniques such as sul ponticello (Sul D / Open A, Sul G / Open D), dynamic markings (f, mf, ff, sff, cresc.), and articulation (accents, slurs). The piece is divided into sections marked S, T, U, and V.